

Since 1887

Schoellhorn-Albrecht

Machine Co., Inc.



FABRICATION FACILITY



Schoellhorn-Albrecht has two facilities and more than 70,000 sq feet of fabrication capacity



*8 Overhead Cranes, 24' under hook
- 25 Ton Lifting Capacity
- 13 Jib Cranes*

Designers & Manufacturers of Marine Deck Equipment

Capabilities

- Steel Welding
- Aluminum Welding
- 25 Ton Crane Capacity
- 24' Under Crane Hook
- 8 Overhead Cranes
- 13 Jib Cranes
- CNC Machining
- Manual Machining
- Press Brakes
- Plate Rolling
- Iron Workers
- Waterjet Table
- Plasma Burn Tables
- Stress Relieving
- Blast and Paint Services

Welding Certifications

- ABS Certified procedures for Aluminum & Steel
- AWS D1.1 & D1.2
- NAVSEA S9074-AQ-GIB-010/248
- NAVSEA S9074-AR-GIB-010/278

Non-Destructive Testing (NDT) Certifications

- NAVSEA T9074-AS-GIB-010/271
 - Magnetic Particle (MT)
 - Visual (VT)
 - Radiographic (RT)
 - Ultrasonic (UT)



Our Gas fired, non-atmosphere controlled oven measures 15' x 25' x 8' deep. Temperature rated to 1600 F. Thermocouples are available for ASME certified loads.



Custom Heavy Fabrication: 20' diameter 42' tall when assembled & made from abrasion resistant steel.



Since 1887

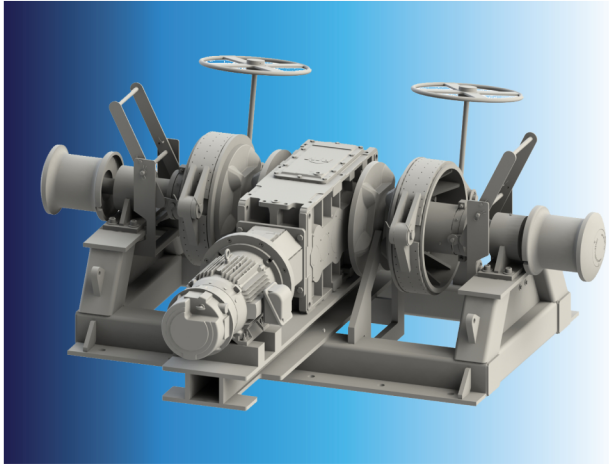
Schoellhorn-Albrecht

Machine Co., Inc.



MADE IN U.S.A.

PRODUCTS



Anchor Windlasses



Deck Fittings

Schoellhorn-Albrecht has been designing and manufacturing Marine Deck Equipment, Custom Castings and Fabrications since 1887.

Our fabrication facility is designed to handle large marine equipment, assemblies and custom fabrications designed to specifications and drawings.

Our facilities are staffed with professional engineers, structural engineers and metallurgical engineers. Our quality assurance program is certified and registered to ISO 9001: 2015.

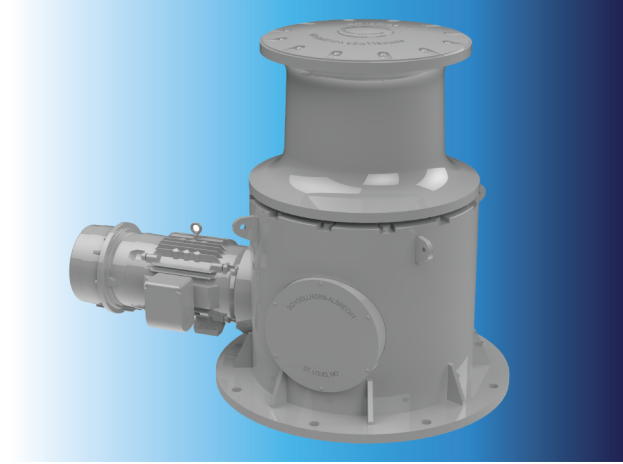
Products

- Deck Machinery
 - Capstans • Winches
 - Anchor Windlasses
- Deck Fittings
- Accommodation Ladders • Gangways
- Custom Castings & Fabrications

Certifications

- ISO 9001:2015
- ITAR: M36217
- JCP: 0030127
- VOSB
- Cage Code: 0MKF7

*Schoellhorn-Albrecht's strength is custom design and fabrication.
Contact us for a tailored solution for your project.*



Capstans



Vessel Access Systems